



URBAN CRIBS.

Step into Tomorrow



WHO ARE WE?

URBAN
CRIBS.

”Step into Tomorrow

with **Urban Cribs**”

Shaping the Future of Housing: In an era of innovation, Urban Cribs presents modular homes at the forefront of modern housing solutions. Our efficient, affordable, and environmentally conscious designs offer a convenient and sustainable living option, revolutionizing the way you experience *home*.

Minimal Environmental Impact

Functional Living

Customizable, Modern & Stylish Designs



WHO ARE WE?

URBAN
CRIBS.

Partnering with renowned Brisbane Builder, Kerdic, boasting over three decades of expertise in residential home construction, we bring you modular homes that redefine comfort and style.

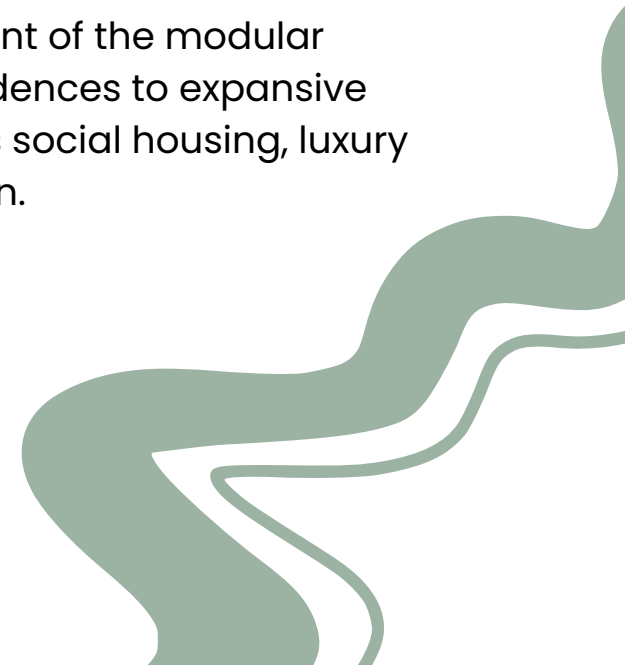
QBCC Licence 22903.

KERDIC

NOVADEKO

Since 2004, Kerdic and its partner, Nova Deko Modular have been at the forefront of the modular movement world-wide, engaging in diverse projects spanning from small residences to expansive multi-level commercial ventures. Our expertise extends across sectors such as social housing, luxury hotels, schools, mining, high-rise apartments, and emergency accommodation.

“Thoughtfully crafted Residences, Shaping Tomorrow...”



WHERE WE BUILD

URBAN
CRIBS.

BUILD REGIONS



SUNSHINE COAST



TOOWOOMBA



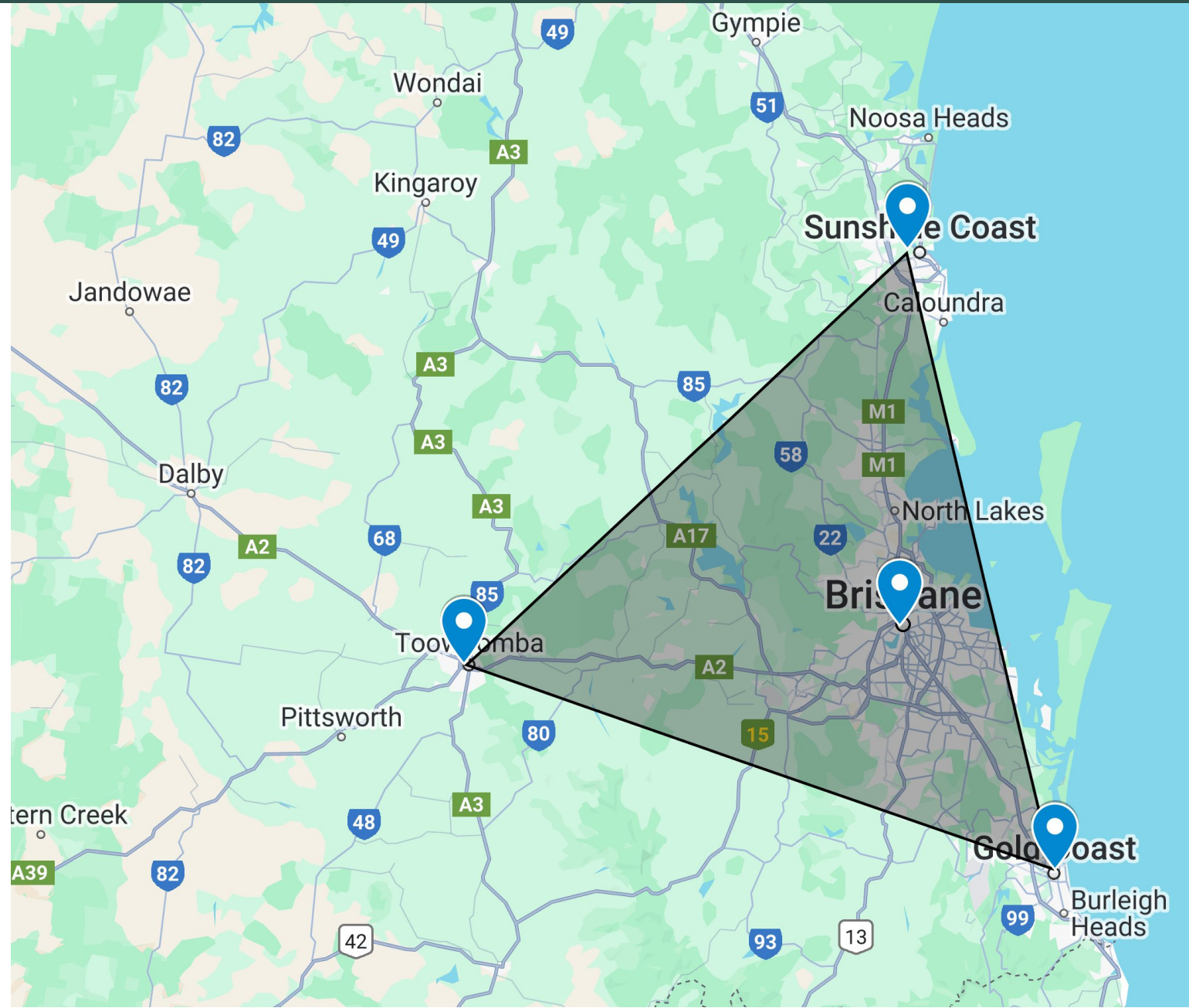
GOLD COAST



BRISBANE



BUILD AREA



1. DISCOVERY
2. REVIEW
3. PRODUCTION
4. INSTALLATION

Let's find out if our Urban Cribbs are the right fit for you!

- Browse our floor plans and choose your favourite design.
- Complete our 'quick quote' tool online - this will provide an indication of pricing. If it works within your budget, please get in contact with us to commence your project.
- Start gathering site documents such as contour plan, soil test & energy efficiency. (We can help with this!)

MODULAR SIZE

URBAN
CRIBS.

Modules can be joined side by side or with a deck adjoining to create larger interior zones.

Below are our standard sizes we use at Urban Crib

2.4m x 12.1m

3.5m x 12.1m

4.2m x 13.1m

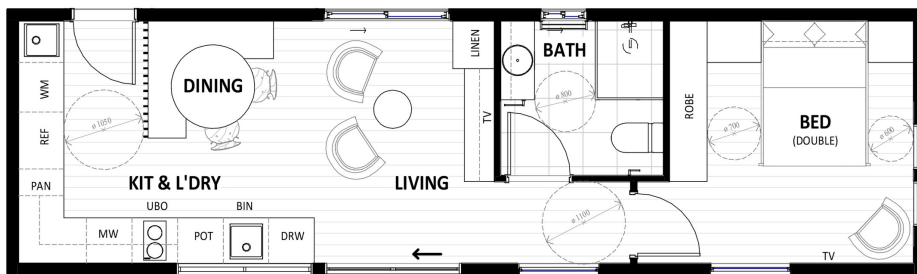


FLOOR PLANS

URBAN
CRIBS.

We have a range of floor plan options to suit any site. Starting from singular modules to multi-pod designs to fit the whole family!

There is also additional upgrades to choose from, during the discovery and design phase. Please see our website to find out more.



Cora
1 Bed | 1 Bath



Colette
4 Bed | 2 Bath

FACADES

URBAN
CRIBS.

Our designer facades are an optional upgrade for you to consider to elevate your design and give your home lovely street appeal.



Step into Tomorrow...

If you have any questions or want to get started please contact us and our team will be in touch with you!



urbancribs.com.au



@urbancribs_



TEL: 07 3376 6788



241 Monier Road
Darra, QLD, 4076