



URBAN CRIBS.

Step into Tomorrow



WHO ARE WE?

URBAN
CRIBS.

”Step into Tomorrow

with **Urban Crib**s”

Shaping the Future of Housing: In an era of innovation, Urban Crib presents modular homes at the forefront of modern housing solutions. Our truly indestructible homes are efficient, affordable, and environmentally conscious. Our designs offer a convenient and sustainable living option, revolutionizing the way you experience *home*.

Truly indestructible

Minimal Environmental Impact

Efficient Construction

Modern, Stylish Designs at an affordable price



WHO ARE WE?

URBAN
CRIBS.

Partnering with renowned Brisbane Builder, Kerdic, boasting over three decades of expertise in residential home construction, we construct modular homes that redefine comfort and style.

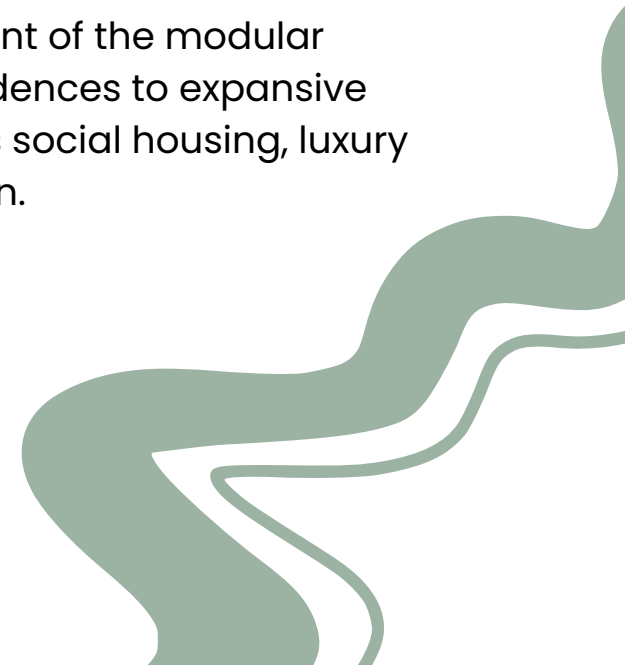
QBCC Licence 22903.

KERDIC

NOVADEKO

Since 2004, Kerdic and its partner, Nova Deko Modular have been at the forefront of the modular movement world-wide, engaging in diverse projects spanning from small residences to expansive multi-level commercial ventures. Our expertise extends across sectors such as social housing, luxury hotels, schools, mining, high-rise apartments, and emergency accommodation.

“Thoughtfully crafted Residences, Shaping Tomorrow...”



WHERE WE BUILD

URBAN
CRIBS.

BUILD REGIONS



SUNSHINE COAST



TOOWOOMBA



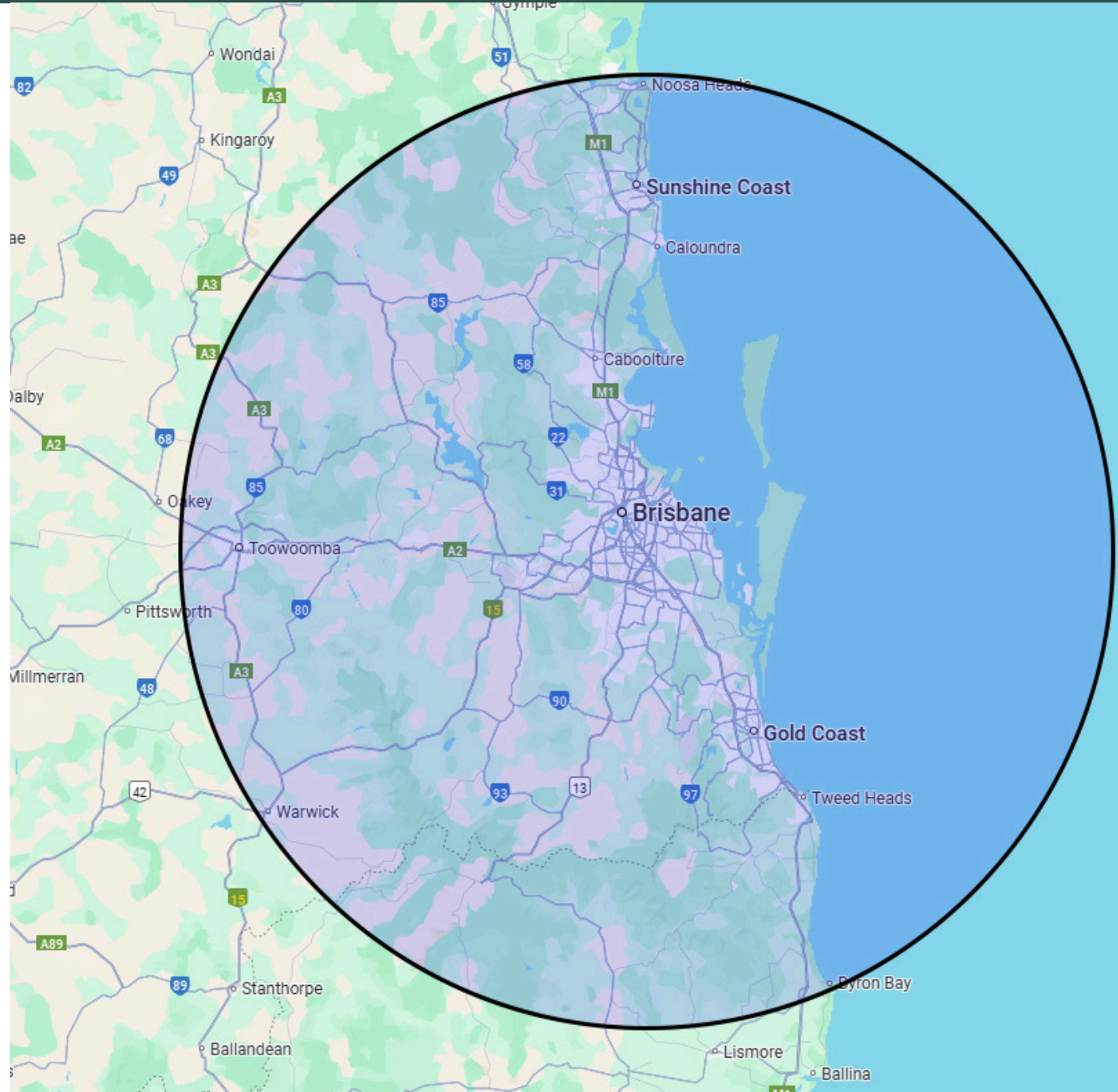
GOLD COAST



BRISBANE



BUILD AREA



BENEFITS OF AN URBAN CRIB

URBAN
CRIBS.

TRULY INDESTRUCTIBLE

BAL 12.5 fire rated, cyclone + earthquake resistant, termite proof, easy to raise in flood prone areas

EFFICIENCY

Have a move in ready homes in only 4 months, with minimal site works required

AFFORDABILITY

60% cheaper than standard construction homes

QUALITY

NNC compliant, high quality materials, constructed by qualified trades

WHAT SERVICES DO WE PROVIDE

URBAN
CRIBS.

We have two options for purchasing your modular home:

SUPPLY & DELIVERY

This option provides the you with a completed module delivered to your site. This option does not include installation.

TURNKEY PACKAGE

This is the complete package, with Urban Cribs taking care of your project from end-to-end, including complete install, resulting in a move-in ready home!

SUPPLY & DELIVERY

1. ORDER
2. PRODUCTION
3. DELIVERY
4. COMPLETION

TURNKEY PACKAGE

1. SITE DISCOVERY
2. APPROVALS
3. PRODUCTION
4. DELIVERY &
INSTALLATION
5. COMPLETION

View our "Process Guide" for more information on the process of building your Urban Crib

MODULAR SIZE

URBAN
CRIBS.

2.44m x 6.05m

3.5m x 9.4m

3.5m x 12.2m

3.9m x 13m

4.2m x 13m

4.2m x 14.2m

Modules can be joined side by side or with a deck adjoining to create larger interior zones.

View our standard sizes we use at Urban Crib



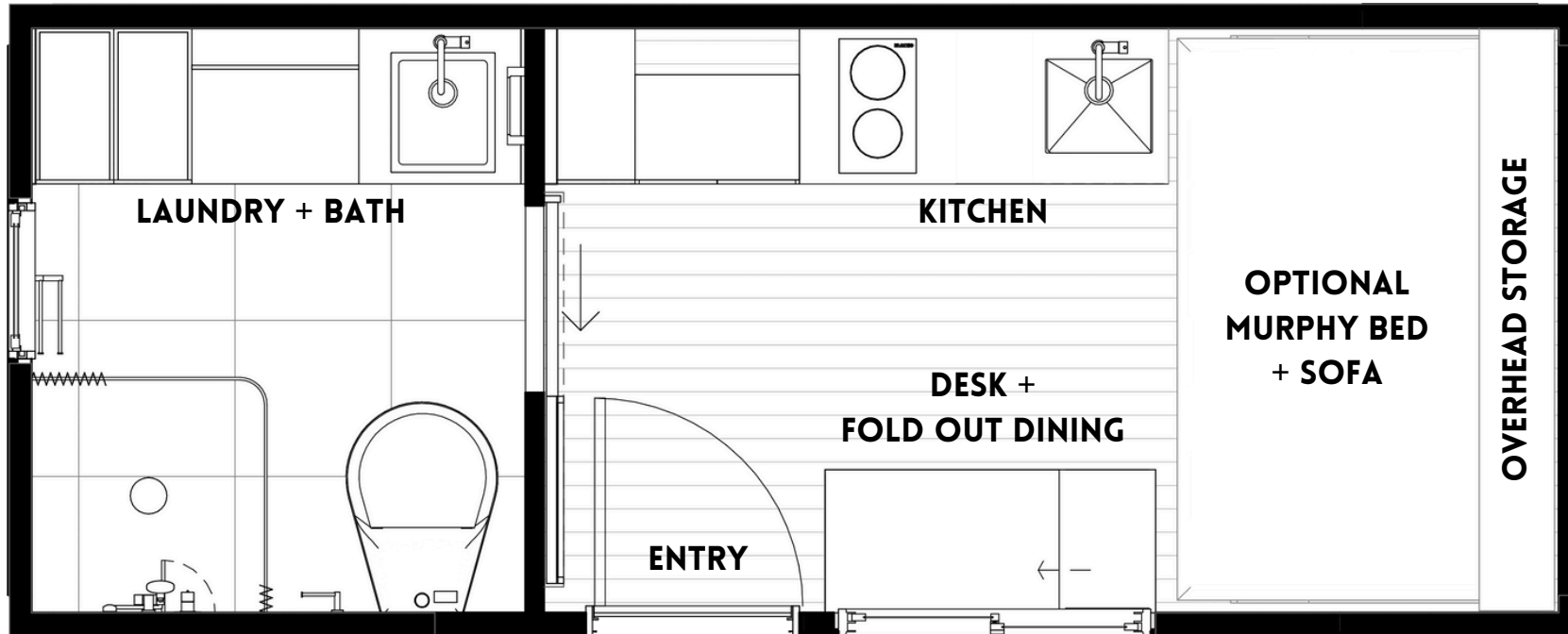
FLOOR PLANS

URBAN
CRIBS.

We have a range of floor plan options to suit any site. Ranging from 1-bedroom single modules, to 4 bedroom multi-pod designs to fit the whole family!
View our floor plans below



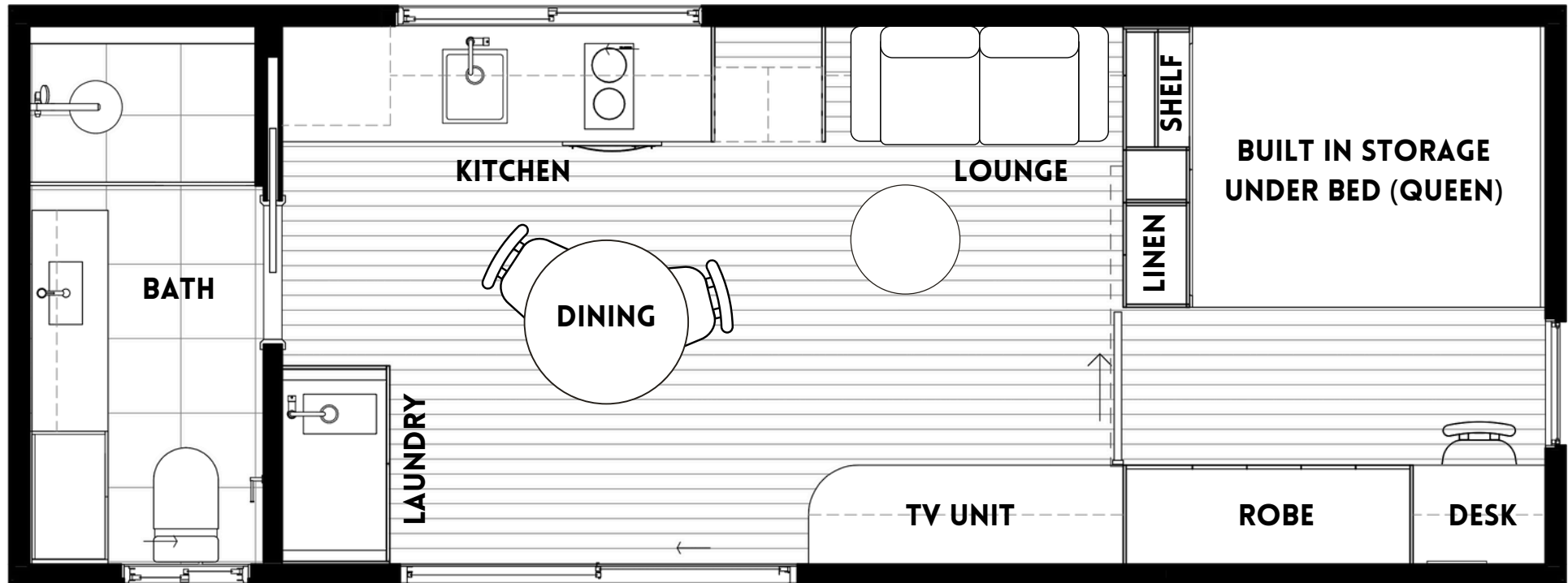
6.05m (L) x 2.44m (W)
= 14.8 m²



ZED
Studio | 1 bath

**URBAN
CRIBS.**

9.4m (L) x 3.5m (W)
= 32.9 m²

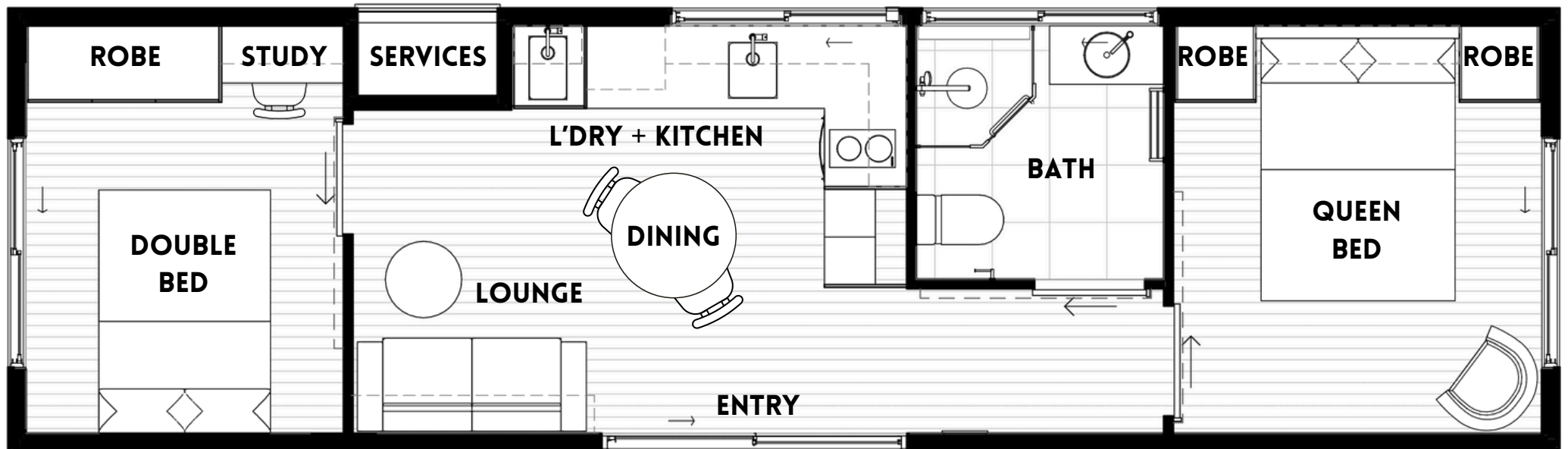


THE URBAN CRIB

1 Bed | 1 bath

URBAN
CRIBS.

12.2m (L) x 3.5m (W)
= 42.7 m²



MILA

2 bed | 1 bath

**URBAN
CRIBS.**

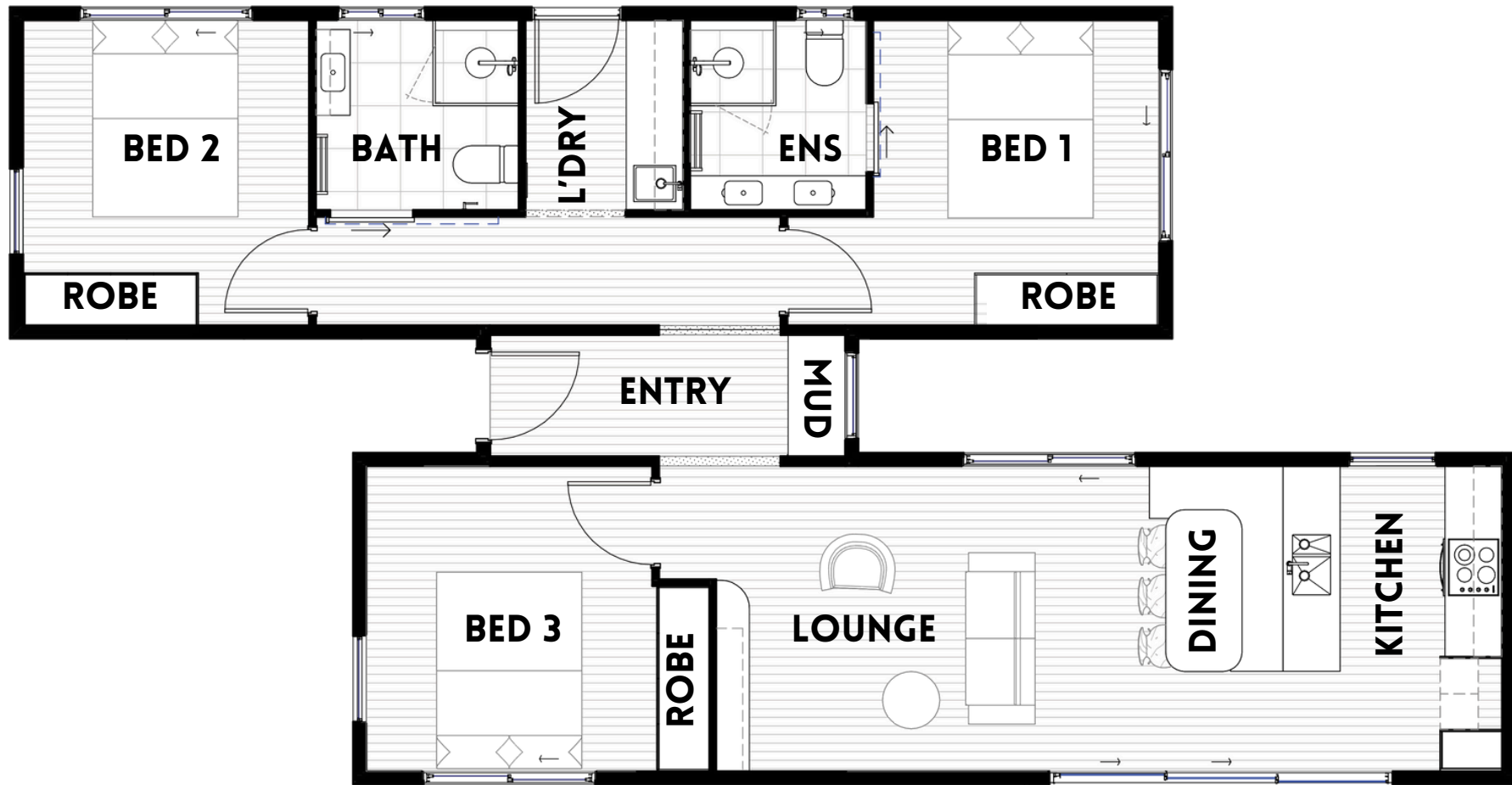
QTY:2 - 12.2m (L) x 3.5m (W) x2
= 85.4 m2



VALENCIA V1
4 bed | 2 bath

**URBAN
CRIBS.**

QTY:2 - 12.2m (L) x 3.5m (W) x 2 + Entry
= 90.5 m²



VALENCIA V2
3 bed | 2 bath

**URBAN
CRIBS.**

FACADES

URBAN CRIBS.

As standard, our turnkey packages include a landing, stairs and ramp to the entry door. Ask our team about adding a larger deck, external roof, or facade features.



Step into Tomorrow...

If you have any questions or want to get started please contact us and our team will be in touch with you!



urbancribs.com.au



[@urbancribs_](https://www.instagram.com/urbancribs_)



TEL: 07 3376 6788



241 Monier Road
Darra, QLD, 4076