



URBAN CRIBS.

Step into Tomorrow

COVE STANDARD INCLUSIONS

- 'Plug & Play' (Semi off-grid)
- Upgrade with an Off Grid Package (Fully off-grid)

Off Grid Living

Discover the perfect transportable retreats for individuals or families!

Thoughtfully crafted to include all the necessities for comfortable living in a compact space. These homes can operate completely off-grid or as a plug & play option.

3 Design Options

KIRRA – 12.1M x 3.5M

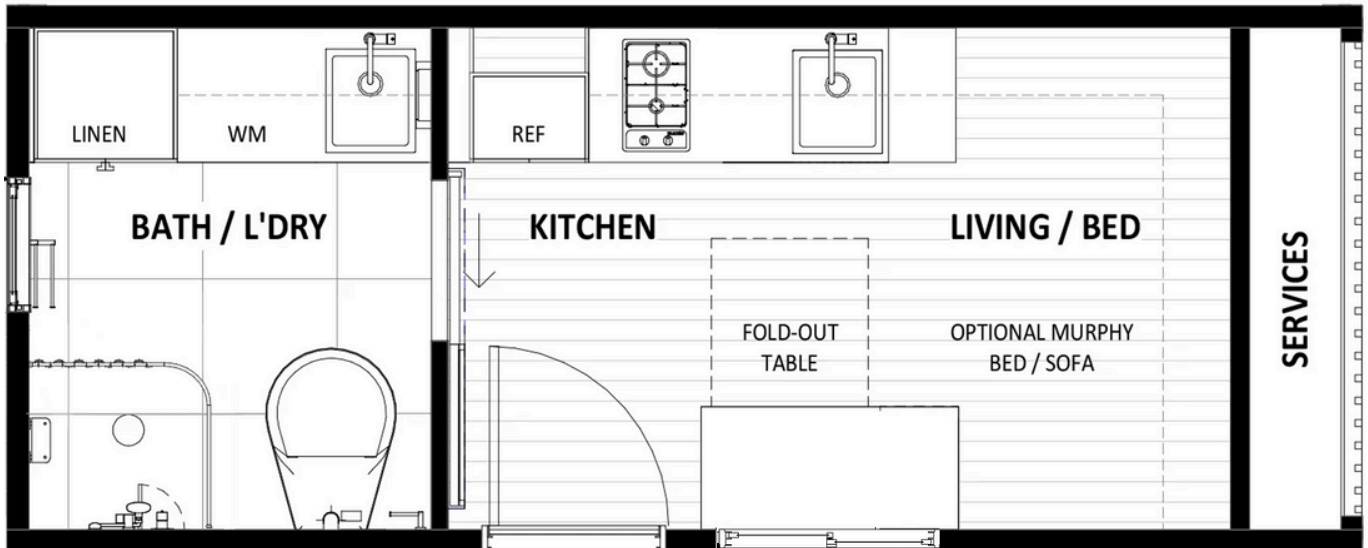
CHASE – 9.4M x 3.5M

COVE – 6M x 2.4M

**URBAN
CRIBS.**

Cove

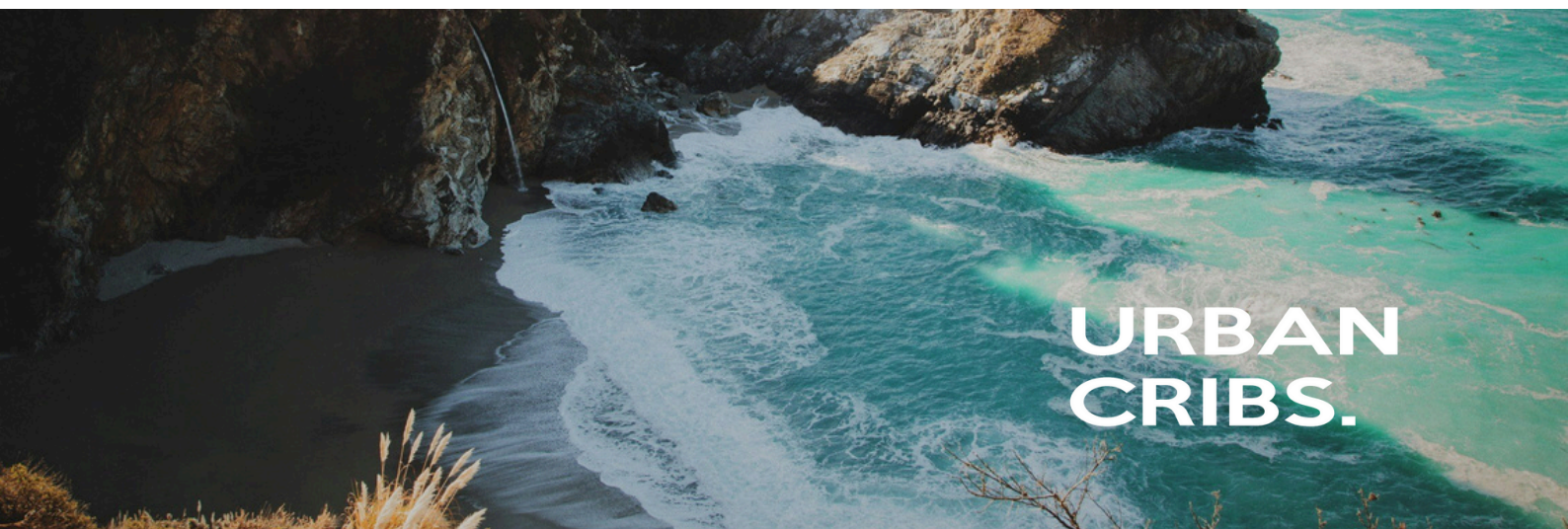
Overall Size: 6.05m x 2.43m



Inspired by Cove: A small, sheltered bay, serene and inviting....

This home is built on skids, making transportation and onsite setup a breeze. It efficiently utilizes 14.7m² through innovative design and versatile furniture.

Available in 'plug & play' compatibility with the option to upgrade your Crib with our off-grid power and water collection kit.



ADVANTAGES

URBAN CRIBS.

These advantages are primarily for our [installed residential range](#), however can be achieved with our off-grid cribs with some extra planning and consideration to placement on-site. Since these cribs are intended for transportable use, obtaining these advantages may necessitate extra setup or enhancements to your selected design dependent on your site specific needs.



All our standard designs are compliant to BAL 12.5

- If you require a higher BAL rating for your site, we can achieve BAL 40
- Our high fire ratings can be done with minimal costs to upgrade compared to typical construction.



Cyclonic Rating of C1 is standard with all designs

- Our designs can be upgraded to suit C2 Cyclonic conditions. We have built projects in high-cyclone zones such as Cairns, QLD.

**For off-grid living, if this is a desired option, the home must be securely installed with proper footings.*



Earthquake Resistant

- Earthquake resistant up to magnitude 6.9



Flood Smart Architecture

- If you need a design for construction in a flood-prone location, feel free to inquire about site-specific pricing for elevating your home on tall posts.
- Additionally, we can explore options for creating a more flood-resilient home by incorporating easy-to-clean finishes, removable and water-resistant joinery, and positioning electrical points at elevated heights.



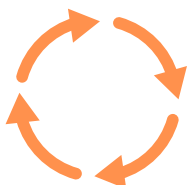
Energy Efficiency - Site Specific

- By carefully executing the design, construction, and material choices, we can attain an 8-star energy-efficient dwelling. Our standard designs achieve a 7-star energy rating.



Termite Resistant

- Our homes are built with a durable steel framework. This design minimises the need for repairs and maintenance over time, as they are resistant to termites and other structural issues, such as warping and rotting.



Lifecycle

- Embracing a 'Cradle to Cradle' philosophy, our homes are designed for easy relocation, minimising on-site disruption. Clients have the flexibility to modify their homes by adding modules or removing them from site and into a new location – taking you wherever life leads you!

STANDARD INCLUSIONS

URBAN CRIBS.

STRUCTURE

- Heavy duty structural steel framing with lightweight steel infill panels to external walls
- 2450mm nominal internal ceiling height
- Lightweight steel framing to internal walls
- Fibre cement lined walls to bathroom
- Acrylic water proofing to bathroom

PLUMBING

- Gas instantaneous hot water system

FINISHES

- Vinyl plank flooring
- Plasterboard internal wall lining
- P50 style shadow line cornice
- Ceramic or Porcelain tiles to floor & wall as per design

EXTERNAL CLADDING

- Fiber cement weatherboard type cladding

ROOFING

- Durable corrugated cor-ten steel roofing

WINDOWS & DOORS

- Double glazed tempered glass (5mm) to aluminium framed windows and external doors, keyed lock to external door.
- Painted pine architraves, skirting and jamb sets for door openings throughout (excluding wet area).
- Flyscreens to window and door.

*Optional Upgrade to steel security / flyscreen is available

INSULATION

- Walls: Rockwool batts
- Ceiling: Polyurethane
- Flooring: Polyisocyanurate Boards (PIR)
(Rigid Foam Board Insulation)

ELECTRICAL

- LED downlights throughout
- Internal Switchboard
- Double general power outlets throughout
- TV point
- Photoelectric smoke alarm with battery backup

Explore our
Upgrade option
for a complete
off-grid kit.

POWER USAGE

To reduce electricity consumption, be mindful of the appliances you use and choose energy-efficient options. If you decide to install a traditional refrigerator or use any high-energy devices, your system may require an upgrade...

KITCHEN

- Custom designed and built kitchen cabinetry.
- Cupboard fronts in either 2pac finish or laminate/melamine as per design and colour scheme chosen.
- Drawer units with soft closing drawer slides
- Cutlery drawer with organiser insert.
- Kitchen splash-back as per design.
- Stainless steel undermount kitchen sink & kitchen mixer tap
- Grease Trap to be connected on-site
- Microwave space (MW not included)
- 2-Burner Gas Cooktop with Rangehood
- Refrigerator space - Fridge not included. *Recommend to use Bushman gas powered fridge. (Bushman DC190L or similar).
- Kitchen Benchtop - Solid Surface (Compliant: No Silica)

BATHROOM & LAUNDRY

- Custom designed and built Laundry cabinetry.
- Vented Washing Machine Cupboard with stop - Chrome. (WM not included)
- Stainless steel undermount Laundry Sink
- Mixer Tap as per design
- Ceramic tiles as per design
- Modern Composting toilet. (Dries waste, needing to be emptied only two to three times a year *depending on number of users).
- Mirror above basin
- Bathroom Accessories: Towel rail or hook as per design, soap holder, toilet roll holder.
- Wall mixer to shower with water saving shower head
- Shower screen or curtain as per design
- Privacy lock to door hardware



Composting Toilet Video

<https://www.youtube.com/watch?v=nTrYDxT8Pi4>

BEDROOM

- Space for Double Bed
- Optional: Murphy sofa bed

DINING / STUDY

- Space saving fold out dining table

OFF-GRID PACKAGE ☐

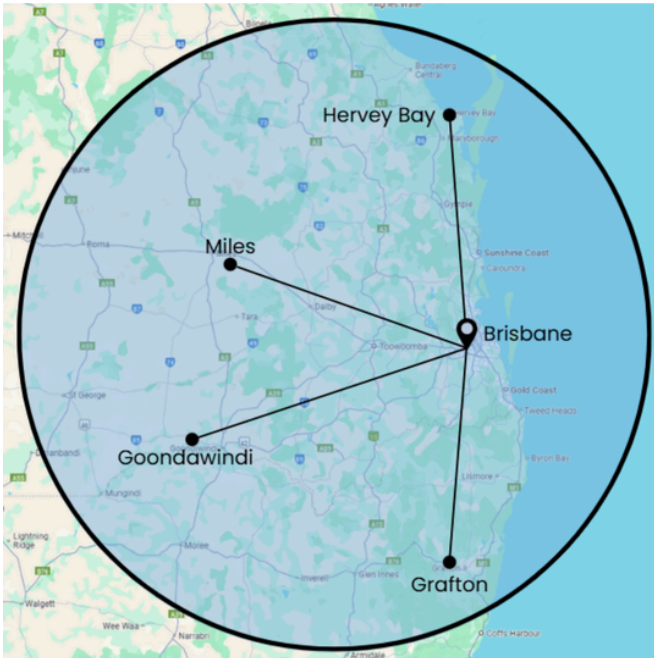
PLUMBING

- 2000L water storage (2 x 1000L Food Grade reconditioned IBC Tanks)
- Water Pump

ELECTRICAL

- 8 x 415w Solar Panels(*Additional panels can be added if requested)
- Inverter
- 20kw Battery Storage (*Additional batteries can be added if requested)

This off-grid package includes allowances for our electrician and plumber to install the solar and water storage systems on-site. It is applicable only to our designated setup zones from our Brisbane office. If you're located outside this area, please reach out to us for a custom quote and to discuss suitable options for off-grid set-up.



For our plug-and-play and off-grid packages, we provide guidance for delivery and off-grid setup by qualified tradespeople and Urban Cribbs teams. This service is available for locations within an approximate three-hour radius of our Brisbane office.



OPTIONAL UPGRADES

URBAN CRIBS.

SECURITY



SECURITY SCREENS

Stainless steel mesh

Enhanced home security, safety against pests, enhanced ventilation & natural light. Quote will apply to all openings in chosen floor plan.

HOODS



FEATURE HOODS

Windows & Door

Enhance architectural appeal and provide weather protection by installing hoods on all openings.

OTHER

TRAILER



We can also provide a trailer option if you're interested in having your home on wheels.

SPECIAL REQUESTS OR NOTES REGARDING YOUR CRIB:



*Step into tomorrow with **Urban Crib**s...*

- The standard inclusions may vary depending on the chosen purchase option.
- Urban Crib
s reserves the right to modify designs and standard inclusions without prior notice.- Urban Crib
s may substitute the make, model, or type of any products listed in the standard inclusions.- Please be aware that some images or graphics featured in our advertising and marketing materials are for illustrative purposes only. All inclusions and finishes are detailed in the inclusions list.
- All fixed internal components of your Urban Crib
s modular home are fully installed at our factory. This includes joinery, flooring, tiles, windows, doors, external cladding, and more.

CONTACT US



urbancribs.com.au



@urbancribs_



TEL: 07 3376 6788



241 Monier Road
Darra, QLD, 4076