



# URBAN CRIBS.

*Step into Tomorrow*



## KIRRA STANDARD INCLUSIONS

- 'Plug & Play' (Semi off-grid)
- Upgrade with an Off Grid Package (Fully off-grid)

# Off Grid Living

*Discover the perfect transportable retreats for individuals or families!*

Thoughtfully crafted to include all the necessities for comfortable living in a compact space. These homes can operate completely off-grid or as a plug & play option.

## 3 Design Options

**KIRRA - 12.1M x 3.5M**

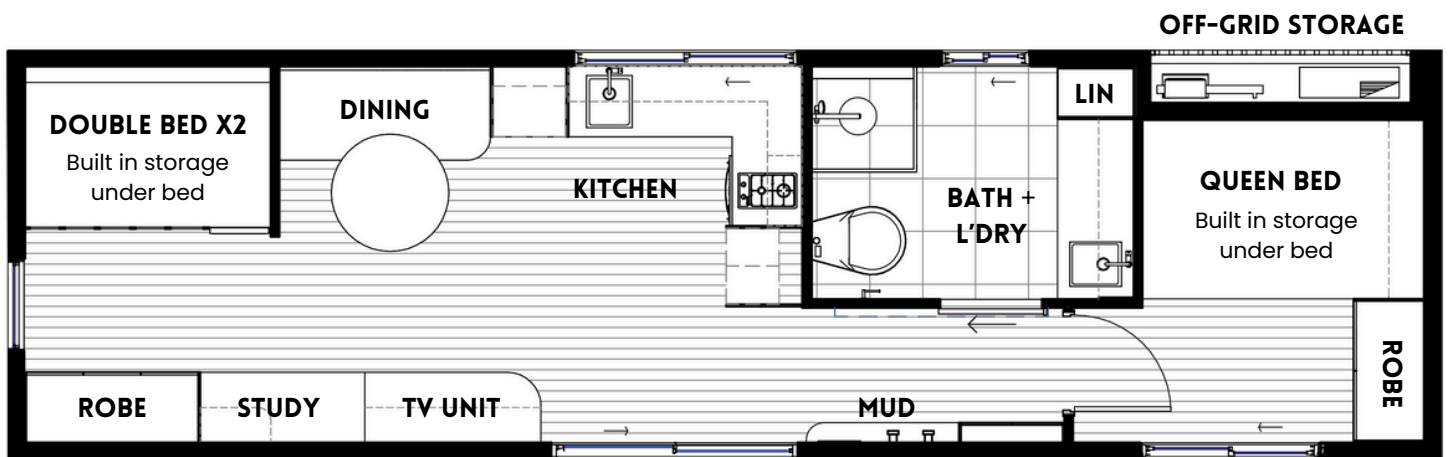
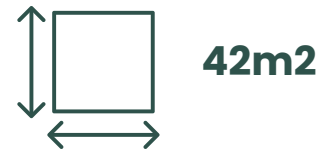
**CHASE - 9.4M x 3.5M**

**COVE - 6M x 2.4M**

**URBAN  
CRIBS.**

# Kirra

Overall Size: 12.1m x 3.5m



***A name inspired by a beach on the Gold Coast, known for its beauty & laid-back lifestyle...***

A three-bed off-grid retreat designed for the whole family! This compact home features a queen bed and two double beds with built-in storage, a functional kitchen and dining area, bathroom with laundry, and a study nook. With a mudroom, off-grid storage area, and even an allocated spot for your furry friend, it's perfect for sustainable, self-sufficient living.

Available in 'plug & play' compatibility with the option to upgrade your Crib with our off-grid power and water collection kit.

## URBAN CRIBS.



These advantages are primarily for our [installed residential range](#), however can be achieved with our off-grid cribs with some extra planning and consideration to placement on-site. Since these cribs are intended for transportable use, obtaining these advantages may necessitate extra setup or enhancements to your selected design dependent on your site specific needs.



#### **All our standard designs are compliant to BAL 12.5**

- If you require a higher BAL rating for your site, we can achieve BAL 40
- Our high fire ratings can be done with minimal costs to upgrade compared to typical construction.



#### **Cyclonic Rating of C1 is standard with all designs**

- Our designs can be upgraded to suit C2 Cyclonic conditions. We have built projects in high-cyclone zones such as Cairns, QLD.

*\*For off-grid living, if this is a desired option, the home must be securely installed with proper footings.*



#### **Earthquake Resistant**

- Earthquake resistant up to magnitude 6.9



#### **Flood Smart Architecture**

- If you need a design for construction in a flood-prone location, feel free to inquire about site-specific pricing for elevating your home on tall posts.
- Additionally, we can explore options for creating a more flood-resilient home by incorporating easy-to-clean finishes, removable and water-resistant joinery, and positioning electrical points at elevated heights.



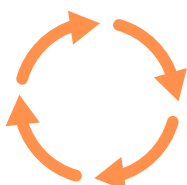
#### **Energy Efficiency - Site Specific**

- By carefully executing the design, construction, and material choices, we can attain an 8-star energy-efficient dwelling. Our standard designs achieve a 7-star energy rating.



#### **Termite Resistant**

- Our homes are built with a durable steel framework. This design minimises the need for repairs and maintenance over time, as they are resistant to termites and other structural issues, such as warping and rotting.



#### **Lifecycle**

- Embracing a 'Cradle to Cradle' philosophy, our homes are designed for easy relocation, minimising on-site disruption. Clients have the flexibility to modify their homes by adding modules or removing them from site and into a new location – taking you wherever life leads you!



# STANDARD INCLUSIONS

# URBAN CRIBS.

## STRUCTURE

- Heavy duty structural steel framing with lightweight steel infill panels to external walls
- 2450mm nominal internal ceiling height
- Lightweight steel framing to internal walls
- Fibre cement lined walls to bathroom
- Acrylic water proofing to bathroom

## PLUMBING

- Gas instantaneous hot water system

## FINISHES

- Vinyl plank flooring
- Plasterboard internal wall lining
- P50 style shadow line cornice
- Ceramic or Porcelain tiles to floor & wall as per design

## EXTERNAL CLADDING

- Fiber cement weatherboard type cladding

## ROOFING

- Durable corrugated cor-ten steel roofing

## WINDOWS & DOORS

- Double glazed tempered glass (5mm) to aluminium framed windows and external doors, keyed lock to external door.
- Painted pine architraves, skirting and jamb sets for door openings throughout (excluding wet area).
- Flyscreens to window and sliding door.

\*Optional Upgrade to steel security / flyscreen is available

## INSULATION

- Walls: Rockwool batts
- Ceiling: Polyurethane
- Flooring: Polyisocyanurate Boards (PIR)  
(Rigid Foam Board Insulation)

## ELECTRICAL

- LED downlights throughout
- Ceiling Fan - Living
- Internal Switchboard
- Double general power outlets throughout
- TV point
- Photoelectric smoke alarm with battery backup

Explore our  
Upgrade option  
for a complete  
off-grid kit.

## POWER USAGE

To reduce electricity consumption, be mindful of the appliances you use and choose energy-efficient options. If you decide to install a traditional refrigerator or use any high-energy devices, your system may require an upgrade...

## KITCHEN

- Custom designed and built kitchen cabinetry.
- Cupboard fronts in either 2pac finish or laminate/melamine as per design and colour scheme chosen.
- Drawer units with soft closing drawer slides
- Cutlery drawer with organiser insert.
- Kitchen splash-back as per design.
- Stainless steel undermount kitchen sink & kitchen mixer tap
- Grease Trap to be connected on-site
- Microwave space (MW not included)
- 2-Burner Gas Cooktop with Rangehood
- Gas Under bench Oven as per design
- Refrigerator space - Fridge not included. \*Recommend to use Bushman gas powered fridge. (Bushman DC190L or similar).
- Kitchen Benchtop - Solid Surface (Compliant: No Silica)

## BATHROOM & LAUNDRY

- Custom designed Joinery with Stainless steel undermount Laundry Sink
- Mirror above basin
- Mixer Tap as per design
- Ceramic tiles as per design
- Modern Composting toilet. (Dries waste, needing to be emptied only two to three times a year \*depending on number of users).
- Vented Washing Machine Cupboard with stop - Chrome. (WM not included)
- Bathroom Accessories: Towel rail or hook as per design, soap holder, toilet roll holder.
- Wall mixer to shower with water saving shower head
- Shower screen or curtain as per design
- Fold-out Ironing Board as per design
- Privacy lock to door hardware

\*Optional extra – the possibility of incorporating an extra basin into the bathroom cabinetry and concealing the laundry sink within a cupboard.



Composting Toilet

<https://www.youtube.com/watch?v=nTrYDxT8Pi4>

## BEDROOM

- Space for Queen Bed (Optional: Built in Queen bed base with storage)
- Robe Storage x 2
- Space for Double Bed (Optional: Double Bed Base or Double Bed Bunk)

## LIVING & DINING

- Built in TV cabinet with overhead storage (TV not included)
- Built in Bench seat with storage. Cushions included
- Built in Study Desk
- Shoe storage and hooks (Mudroom)

## OFF-GRID PACKAGE ☐

### PLUMBING

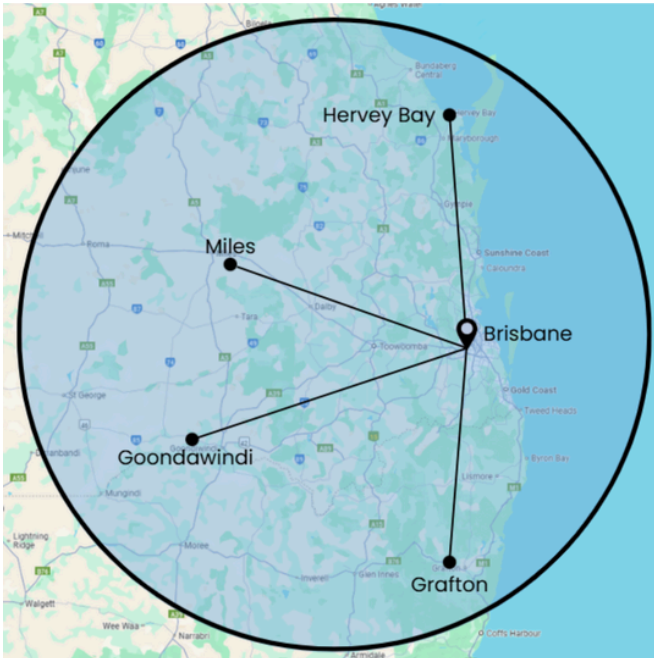
- 3000L water storage (3 x 1000L Food Grade reconditioned IBC Tanks)
- Water Pump

### ELECTRICAL

- 5kw Solar Panel System (12 x 415w Solar Panels)
- Inverter
- 30kw Battery Storage

\*Additional Solar Panels or Batteries can be added if requested

*This off-grid package includes allowances for our electrician and plumber to install the solar and water storage systems on-site. It is applicable only to our designated setup zones from our Brisbane office. If you're located outside this area, please reach out to us for a custom quote and to discuss suitable options for off-grid set-up.*



*For our plug-and-play and off-grid packages, we provide guidance for delivery and off-grid setup by qualified tradespeople and Urban Cribbs teams. This service is available for locations within an approximate three-hour radius of our Brisbane office.*





# OPTIONAL UPGRADES

# URBAN CRIBS.

## SECURITY



### SECURITY SCREENS

Stainless steel mesh

Enhanced home security, safety against pests, enhanced ventilation & natural light. Quote will apply to all openings in chosen floor plan.

## HOODS



### FEATURE HOODS

Windows & Door

Enhance architectural appeal and provide weather protection by installing hoods on all openings.

## AC UNIT



### AIR CONDITIONING

Living Room

Cooling or heating options are available for additional costs. \*Please be aware: If you intend to live completely off-grid, you may need extra power.

## OTHER

### TRAILER



We can also provide a trailer option if you're interested in having your home on wheels.

### SPECIAL REQUESTS OR NOTES REGARDING YOUR CRIB:

---

---

---





## *Step into tomorrow with **Urban Crib**s...*

- The standard inclusions may vary depending on the chosen purchase option.
- Urban Crib
s reserves the right to modify designs and standard inclusions without prior notice.- Urban Crib
s may substitute the make, model, or type of any products listed in the standard inclusions.- Please be aware that some images or graphics featured in our advertising and marketing materials are for illustrative purposes only. All inclusions and finishes are detailed in the inclusions list.
- All fixed internal components of your Urban Crib
s modular home are fully installed at our factory.- This includes joinery, flooring, tiles, windows, doors, external cladding, and more. Consequently, our off-grid models can be positioned, connected to water, have the kitchen grease trap installed, and are ready to move into!

## CONTACT US



[urbancribs.com.au](http://urbancribs.com.au)



TEL: 07 3376 6788



@urbancribs\_



241 Monier Road  
Darra, QLD, 4076